

**HELENA WALDMANN**

**BURKABONDAGE**



Technische Leitung:  
Tontechnik:  
Produktion / Tour:

Carsten Wank  
Stephan Wöhrmann  
Claudia Bauer

[wank@tv-event.de](mailto:wank@tv-event.de)  
[stephanwoehrmann@web.de](mailto:stephanwoehrmann@web.de)  
[claudia.bauer@ecotopiadance.com](mailto:claudia.bauer@ecotopiadance.com)

+49 172 861 74 39  
+49 179 114 23 49

## Technical Rider

### I. General

#### dancetheatre

Performer: 2 dancers  
1 musician  
1 actor  
1x director  
3x technicians  
1 management

Duration: ca 65min - without intermission

min space depth 10m  
width 12 m  
height 6m (flybar /truss)

### II. Stage

Provided by Helena Waldmann Company

- ! 1 cube 2x2mx1,8m build out of aluminium pipes covered with scrim
- ! 8 x Spannssets 1t for rigging to side walls (12-12,5m width)
- ! 1 parashoot with climbing harness
- ! 1 bondage rope with swiffel
- ! traditional Daf from Iran
- ! bondage ropes

to be provided by presenter:

- ! black dancefloor min 12m x 10m
- ! 4x Anker / rigging points in the side walls as shown on the stage plot to stretch / rigg the cube (pro Point 1t / with O-ring or Ringöse M16) – if the stage is bigger than 12m ! 0,5m , the rigging points need to be extended with black steelropes
- ! min 9-10 flybars or trusses  
3 x stage - fixed to side
- ! 4-5 x lights and sound above stage  
2 x light & video FoH (1x edge off stage/dancefloor , 1x 4m in front of stage)
- ! dark walls or black masking (german masking)

the dancefloor has to be cleaned for rehearsal and show

**HELENA WALDMANN**

**BURKABONDAGE**



**III. Light:**

to be provided by presenter:

see lighting plot

- ! 4 single fluorecents 1,2m, vertical standing and dimmable (single)
- ! 32x 2kW PC with barndoors
- ! 3x 1kW PC with barndoors
- ! 11x Par 64 CP62, black ond floor stands
- ! 14-16x ETC Source 4 36! , 4-6x Iris
- ! 65x dimmer á 2kW
- ! lighting desk e.g. ETC Expression
  
- ! Genie,
- ! 1x ladder working hight 7-8m  
(absolutly necessary - while siderigging is blocking the stage, so no entrance with genie )
  
- ! Lee 201, Lee 174. Rosco 119 (Lt Hanburg Frost) , Black Wrap, Alutape

**IV. Video**

By Helena Waldmann Company

- ! MacBook Pro (DVI OUT / VGA)

to be provided by presenter:

- ! 5000 Ansi Lumen beamer
- ! projection 4:3 - on front of Kubus (2m width) from FoH  
see VI drawings
- ! cable, plugging , adapter
- ! 1 DVD player (Backup)
- ! Shutter / Blacky run by DMX

Please suggest lens and final position in discussion with technical management of Helena Waldmann Company

**V. Sound:**

by Helena Waldmann Company

- ! 1 x AKG C 418, Clipmikro

:

**HELENA WALDMANN****BURKABONDAGE****Mixing board/FX/EQs:**

- ! 1 x mixing desk, 16/8/2, 4 Aux , pre/post switchable, Midas, Yamaha
- ! 1 x professional CD player
- ! 2 x 31 band graphic equalizer, stereo, Klark, BSS o.e.
- ! 2 x dbx166
- ! 1 x digital reverb, Lexicon PCM 80/90, o.e.
- ! 1 x digital delay (time correction for FoH) BSS TCS 804

**Mikrophones**

- ! 2 x condenser microphone, cardio (AKG C451, Neumann KM 140 ...)
- ! 1 x Sennheiser MD 421 or D 112 or RE 20
- ! 1 x Sennheiser MKE 2 with cable (with pockettransmitter, if no cablemic available, no headset!)
- ! 1 x boundary microphone, Crown PCC 160
- ! 1 x Shure SM 58
- ! 1 x handheld wireless microphone Sennheiser/ Shure + receiver
- ! 1 x lavalier mikrophone, omnidirectional –Sennheiser MKE 2 (no headset)
- ! 1 x pockettrenamitter+ receiver– Sennheiser/Shure (2 units, if MKE 2 above not available as cabled version)
- ! 1 x splitter/ signal amplifier
- !

**Speaker System:**

High quality, powerful loudspeaker system, appropriate to the acoustic conditions of the space. Including center cluster, seperate subwoofers, delayline (if necessary).

Prefered brands are: D&B, Meyer, Nexo, L-acoustics

- ! Monitoring:  
2 x loudspeaker 500 watt, type D&B C6 o.e.

**Communication**

- ! Intercom system for stage, Light, additional 3x walky talky

**All cables, adapters, plugs to connect the system**

*contact:* Stephan Wöhrmann: [stephanwoehrmann@web.de](mailto:stephanwoehrmann@web.de)

**VI. Schedule and Crew****Setup day1:**

09:00-13:00 TE Setup / light / stage / sound  
 13:00-14:00 sound check  
 14:00-18:00 TE / focus  
 19:00-20:00 Spacing  
 20:00-23:00 Focus & Cueing

**Personal :** 3x stage , 2x sound, 3x light, 1x boardoperator, 1x video  
 1x dresser tba ca. 3-4h costume cleaning and ironing if necessary

# HELENA WALDMANN

## BURKABONDAGE

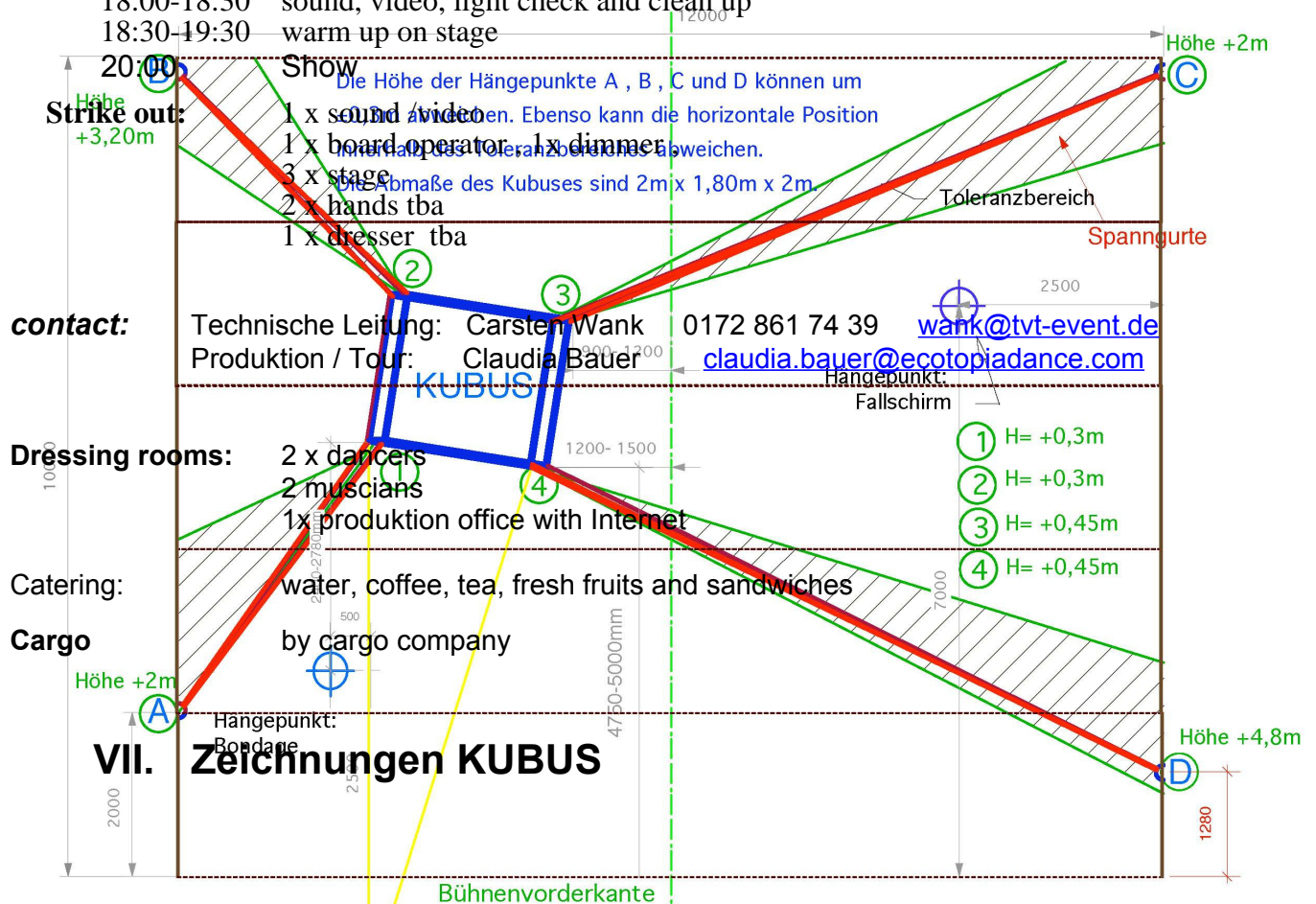
### Show1 day2:

09:00-12:00 tba Cueing  
 12:00-14:00 sound check  
 14:00-17:00 Runthrough  
 17:00-18:00 corrections  
 18:00-18:30 sound, video, light check and clean up  
 18:30-19:30 warm up on stage  
 20:00 Show

**SHOWCREW:** 1 x sound /video  
 1 x board operator , 1x dimmer ,  
 1 x stage (cleaning and preparing only)  
 1 x dresser tba

### Show2 day3:

15:00-17:00 tba rehearsal or tpossible  
 17:00-18:00 corrections  
 18:00-18:30 sound, video, light check and clean up  
 18:30-19:30 warm up on stage



HELENA WALDMANN

BURKABONDAGE - NO ORDINARY EXPERIENCE

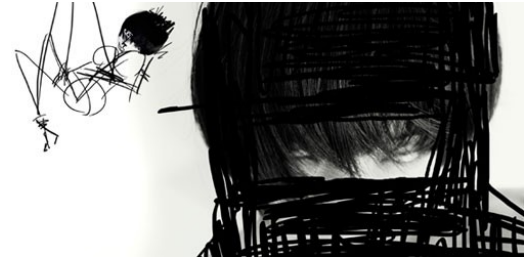
Produktion  
 ecotopia  
 dance productions

Technische Leitung  
 CARSTEN WANK  
 WANK@TVT-EVENT.DE  
 +49 172 861 74 39

general stage plot  
 not in scale  
 M  
 CW  
 erstellt: 12.10.09

**HELENA WALDMANN**

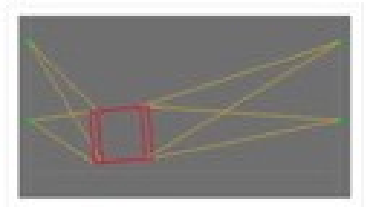
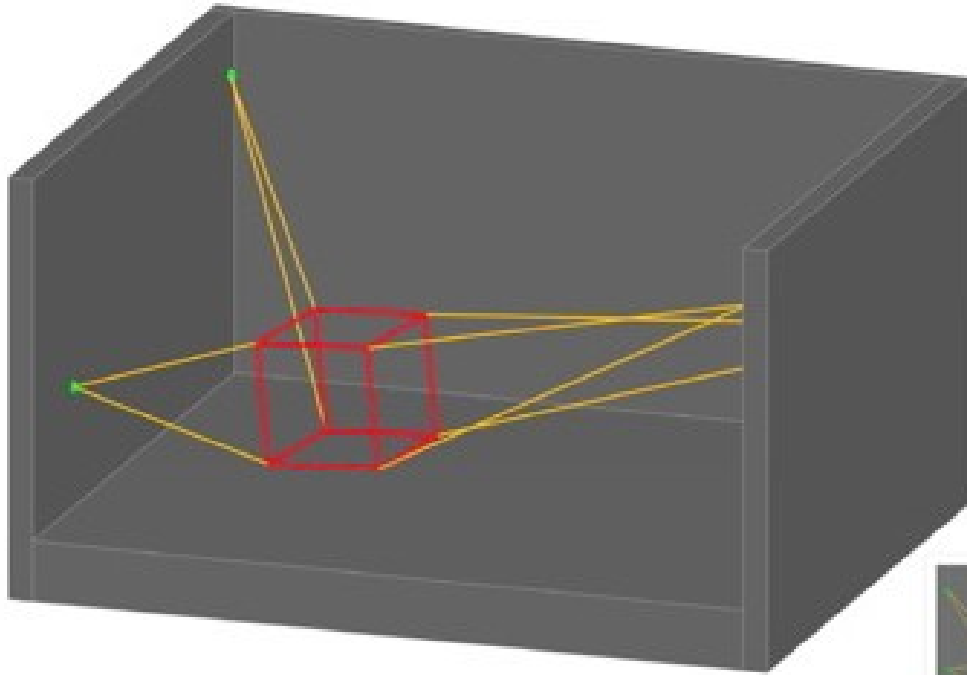
**BURKABONDAGE**





HELENA WALDMANN

BURKA BONDAGE



Kubus Aufhängung

